

**Copper Cabling
Systems**

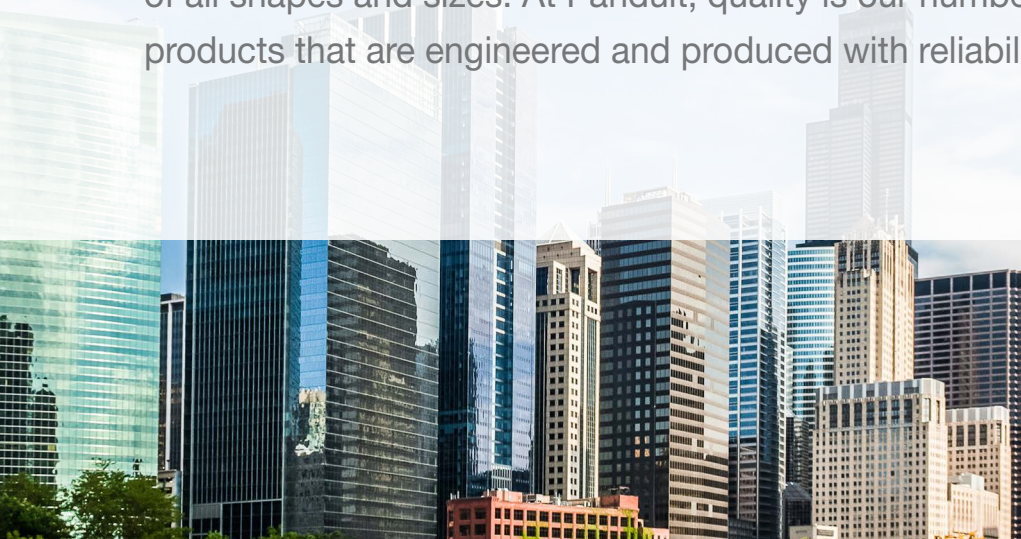


**Innovative Connectivity Solutions
for Maximum Performance**



Panduit® Copper Cabling Systems

Panduit offers a range of copper cabling solutions to fit the needs of all types of applications. From trading floors to operating rooms, classrooms to store fronts, Panduit's copper systems provide the infrastructure needed to support networks of all shapes and sizes. At Panduit, quality is our number one concern, resulting in products that are engineered and produced with reliability and durability in mind.



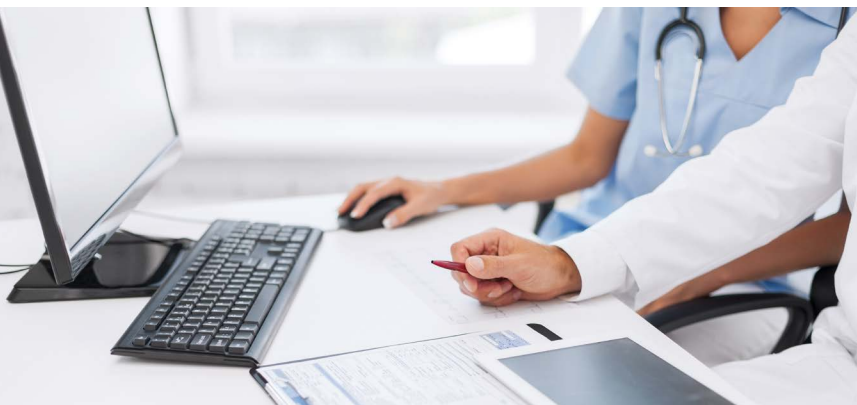
Innovations in Structured Cabling From Panduit

- Industry's first tool-less jack for ease of installation and better performance
- 500+ patents on network infrastructure
- Invented cable management to improve organization, air flow, and aesthetics
- Pioneered 28AWG cabling to help reduce footprint
- Over 250M jacks installed globally

Applications Supported by Copper Cabling

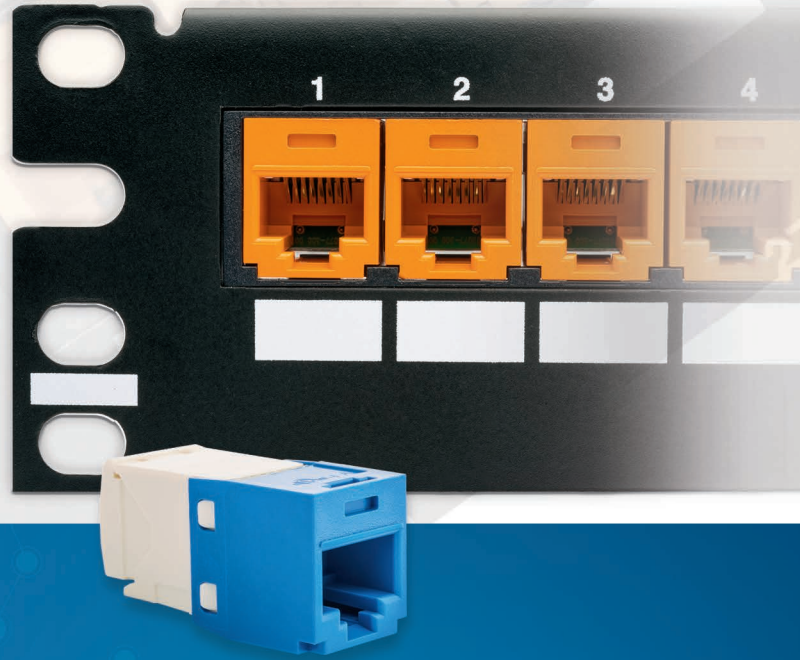
- Power over Ethernet
- Wireless connectivity
- Intelligent lighting
- Security cameras
- Audio/visual, including HDBaseT*
- Building automation systems

*HDBaseT is a registered trademark of Valens Semiconductor Ltd.



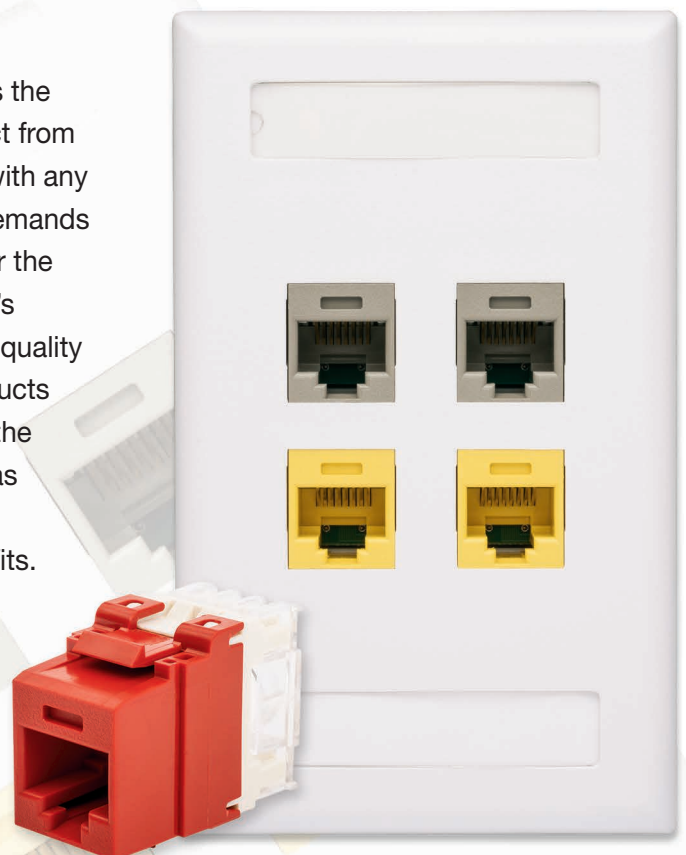
Mini-Com[®] Cabling System

For the most demanding applications, the Panduit[®] Mini-Com Copper Cabling System is designed to provide the most innovative features and the lowest cost of ownership over the life of your network. We strive to provide the perfect solution for any application, which means offering custom cable assemblies, a wide range of colors and lengths, and a large selection of patch panel and faceplate types to suit your needs. If network performance is critical to helping you achieve your business goals, choose the Mini-Com Copper Cabling System for unsurpassed performance, quality, and innovation to accommodate the latest technologies.



NetKey[®] Cabling System

The Panduit Keystone Copper Cabling System delivers the quality and trusted performance you've come to expect from Panduit with an industry-compatible footprint for use with any keystone opening. Designed to support the network demands of our daily lives, the NetKey Product Family is ideal for the classroom, conference room, office building, or doctor's office. With component-compliant jacks and the same quality measures as our Mini-Com Product Line, NetKey Products provide the performance and durability you need with the flexibility to integrate with specialty applications such as audio/visual systems, office furniture with integrated connectivity, designer faceplates, and brownfield retrofits.



Mini-Com® Copper Cabling System – Unshielded

Category 6A utilizes MaTriX technology to provide end-to-end integrated alien crosstalk suppression

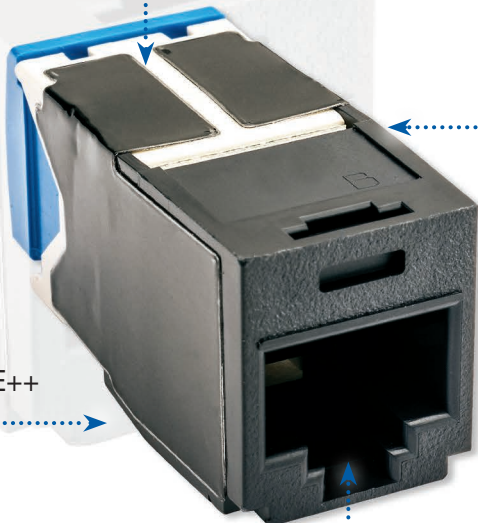


Jack features optional integrated shutter for protection against dust and debris



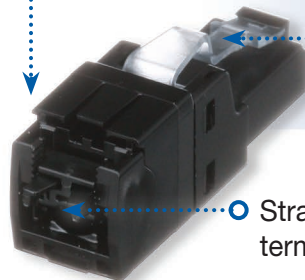
100% production tested for quality performance

Connector rated to 65C for optimal PoE++ performance



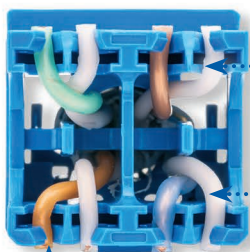
Connectivity rated to 2500 mating cycles with integrated arc suppression for longest-lasting performance, even running PoE++

2-piece construction for easy installation



Easily connect cabling directly to end device

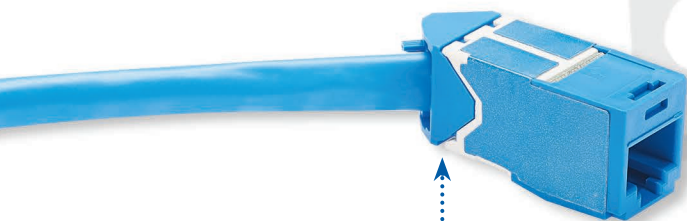
Straight or angled termination options



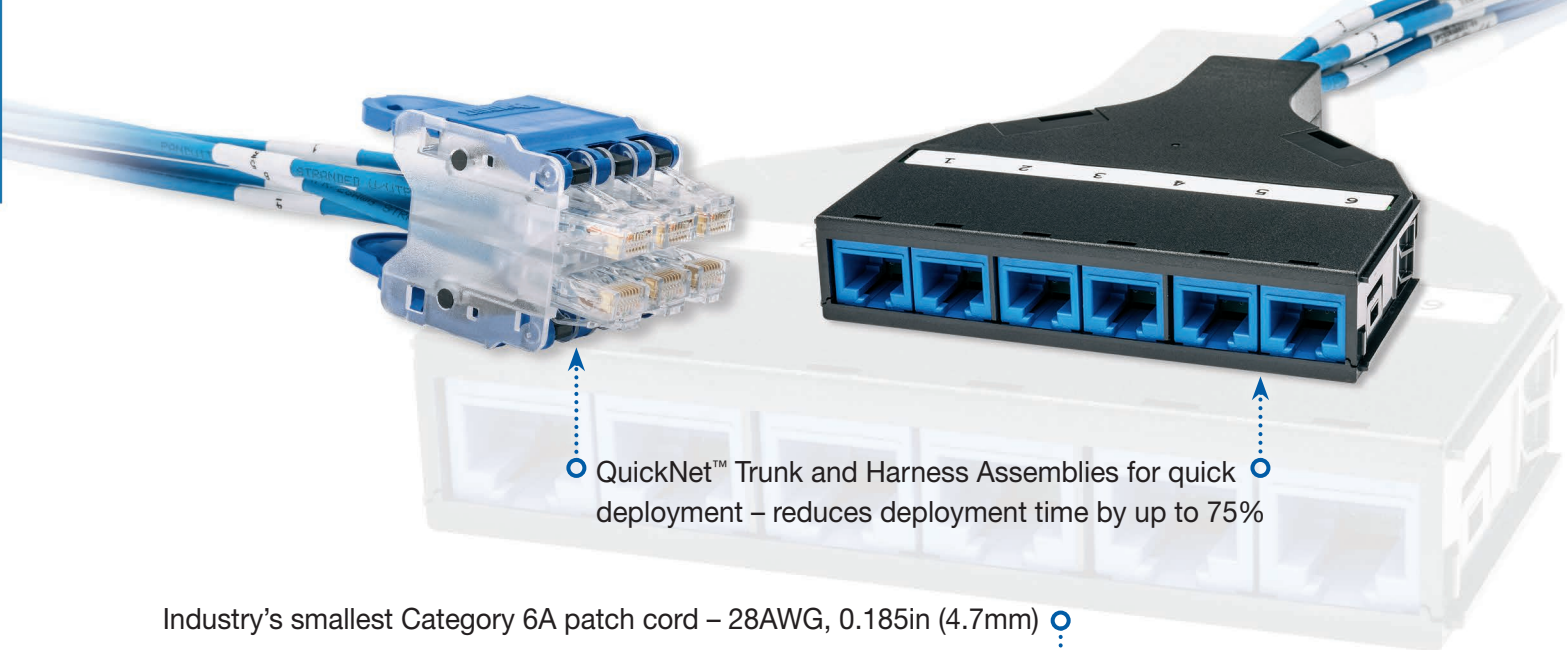
Tool-less termination maintains conductor twist to the point of termination for reliable performance and provides the industry's highest performing and fastest termination

Reterminate up to 20 times

Terminates 22 – 26 AWG cable (28 – 30 AWG jack also available)



45-degree termination allows for installations in tight-spaces where bend radius is a concern



QuickNet™ Trunk and Harness Assemblies for quick deployment – reduces deployment time by up to 75%

Industry's smallest Category 6A patch cord – 28AWG, 0.185in (4.7mm)



Tangle free latch prevents cables from snagging

100% production tested for quality performance

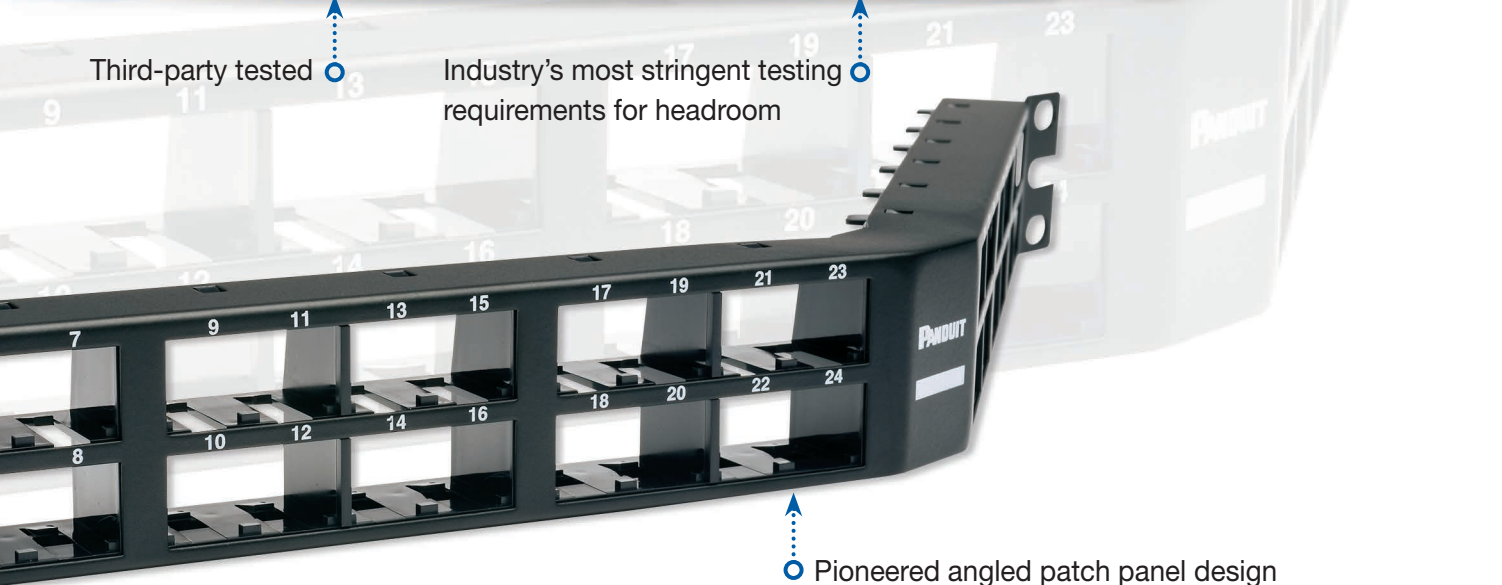


Category 6A, Vari-MaTriX foil provides best-in-class immunity to external noise while optimizing alien crosstalk and PoE performance with the industry's smallest Category 6A cable diameter.

Category 6A cable is rated to 90C

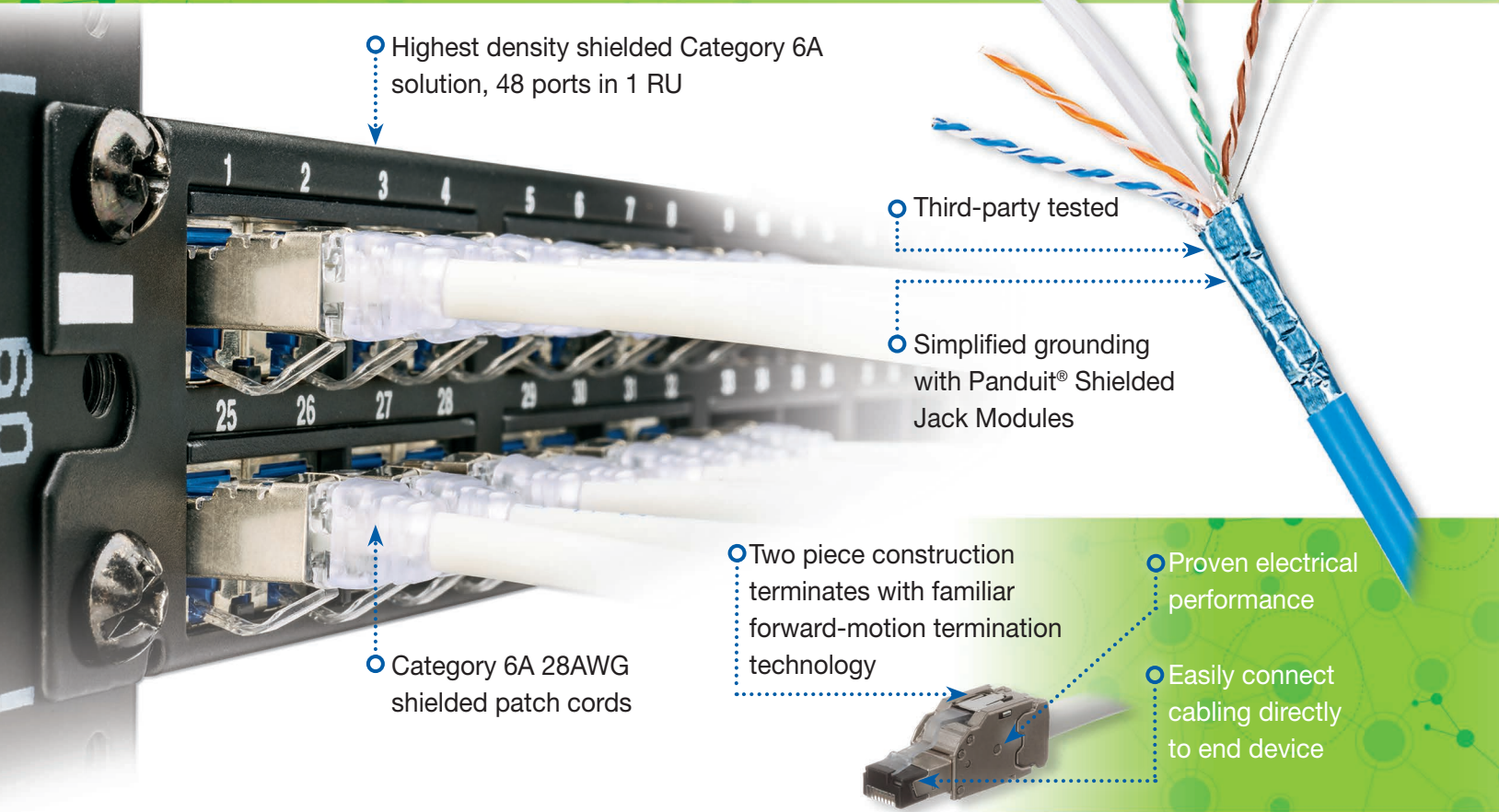
Third-party tested

Industry's most stringent testing requirements for headroom



Pioneered angled patch panel design

Mini-Com[®] Copper Cabling System – Shielded



○ Highest density shielded Category 6A solution, 48 ports in 1 RU

○ Third-party tested

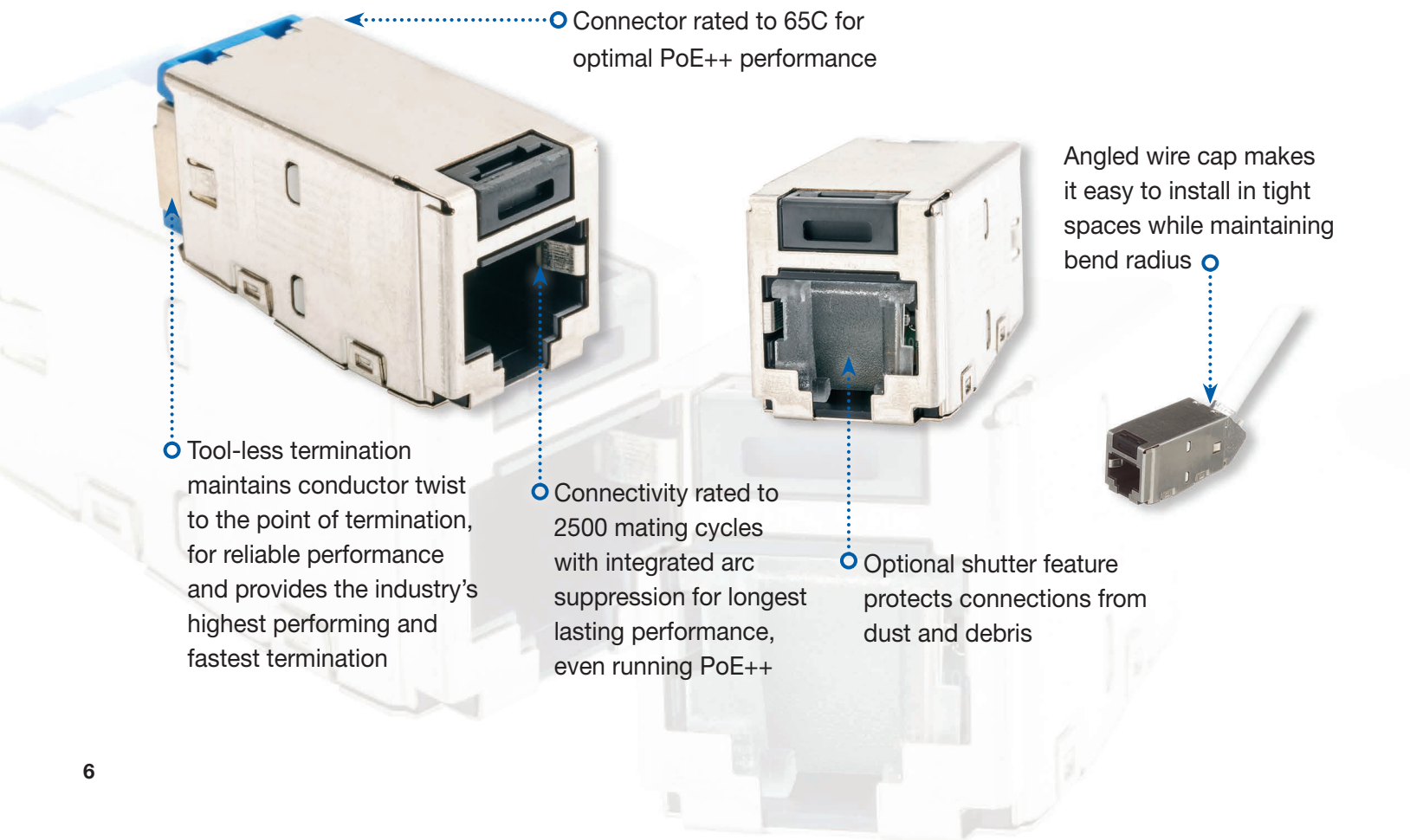
○ Simplified grounding with Panduit[®] Shielded Jack Modules

○ Category 6A 28AWG shielded patch cords

○ Two piece construction terminates with familiar forward-motion termination technology

○ Proven electrical performance

○ Easily connect cabling directly to end device



○ Connector rated to 65C for optimal PoE++ performance

Angled wire cap makes it easy to install in tight spaces while maintaining bend radius ○

○ Tool-less termination maintains conductor twist to the point of termination, for reliable performance and provides the industry's highest performing and fastest termination

○ Connectivity rated to 2500 mating cycles with integrated arc suppression for longest lasting performance, even running PoE++

○ Optional shutter feature protects connections from dust and debris

Grounding Made Easy



1

Jack module with integral shield and grounding tab provides 360° conductive path for proper grounding.



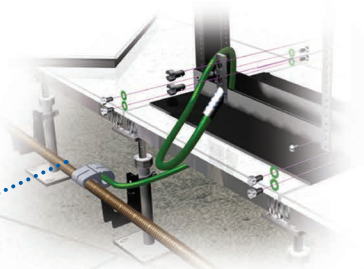
2

Contact between the module grounding tab and patch panel latch provide bond necessary for grounding.



3

The patch panel is bonded to the rack using thread-forming bonding screws that provide metal to metal contact.



4

The entire system is bonded to a common grounding point located in the floor, using Panduit® StructuredGround™ Common Bonding Network (CBN) Jumper Kit.

- Integrated grounding and bonding provides an easy to install shielded cabling system

NetKey® Keystone Copper Cabling System

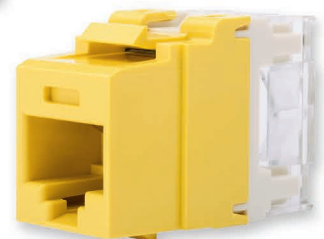
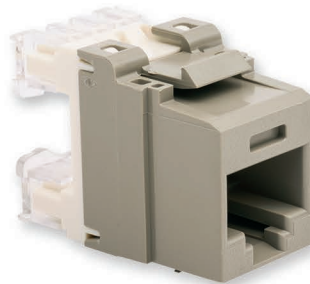
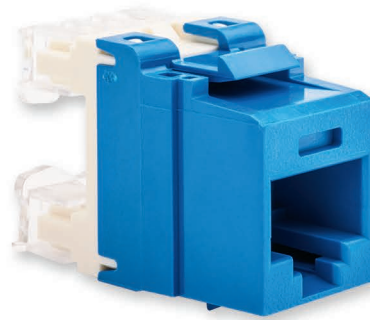
○ Third-party tested, component-compliant connectivity for reliable performance

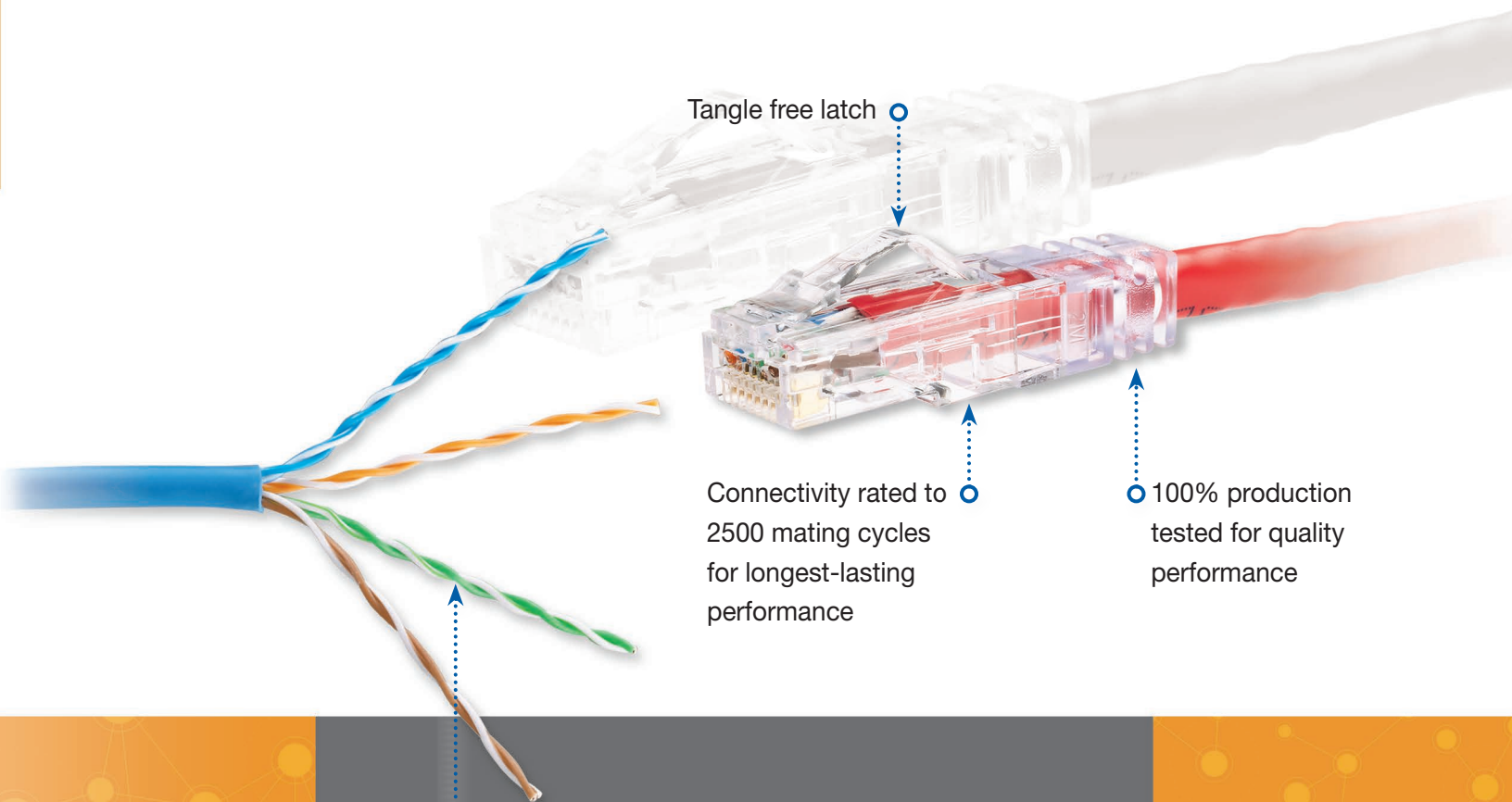
Familiar 110-punchdown termination ○

○ Industry's most stringent testing requirements for Category 6 headroom

○ 100% production tested for quality performance

○ Keystone footprint for compatibility with any keystone opening



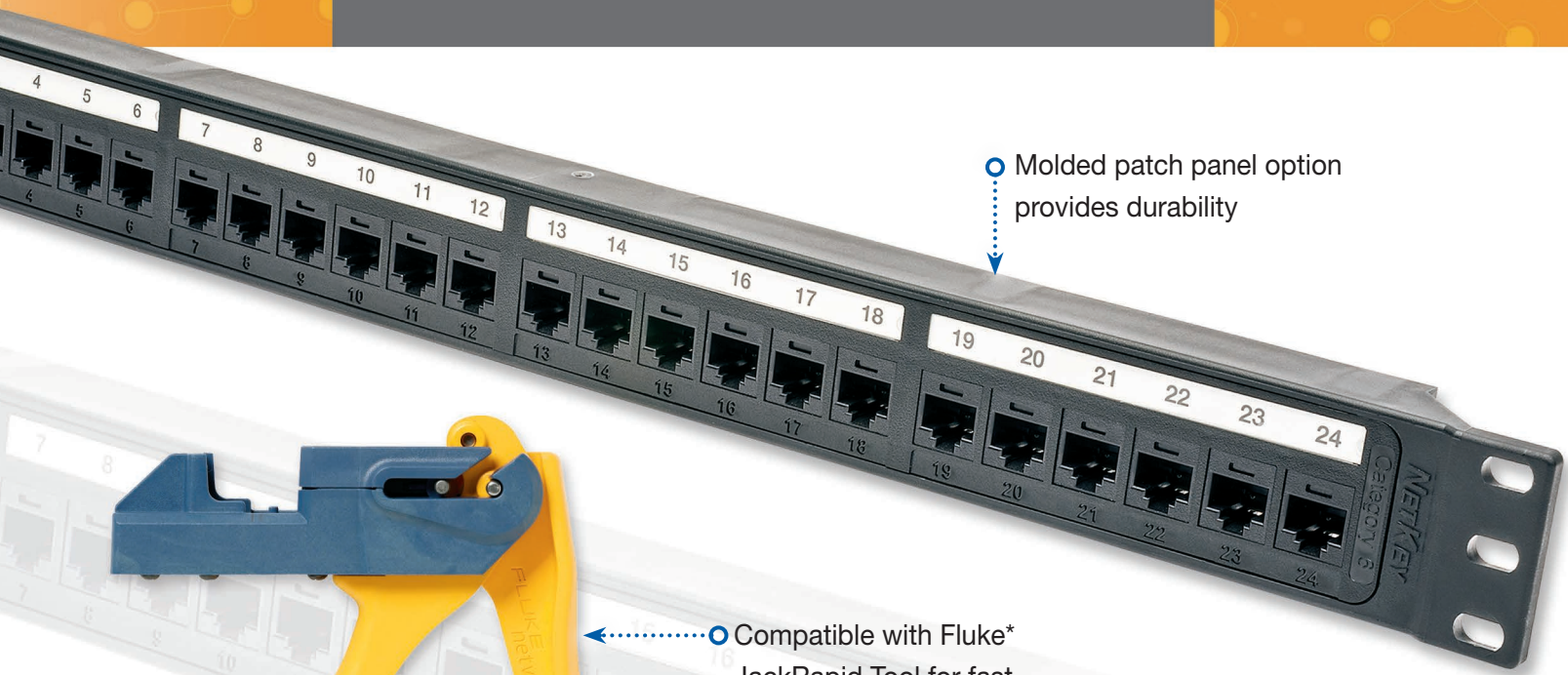


Tangle free latch

Connectivity rated to 2500 mating cycles for longest-lasting performance

100% production tested for quality performance

Available as an end-to-end Panduit® Solution for easy order and delivery



Molded patch panel option provides durability

Compatible with Fluke* JackRapid Tool for fast, easy termination

*Fluke is a registered trademark of Fluke Corporation.

Industry-Leading Category 6A Solution

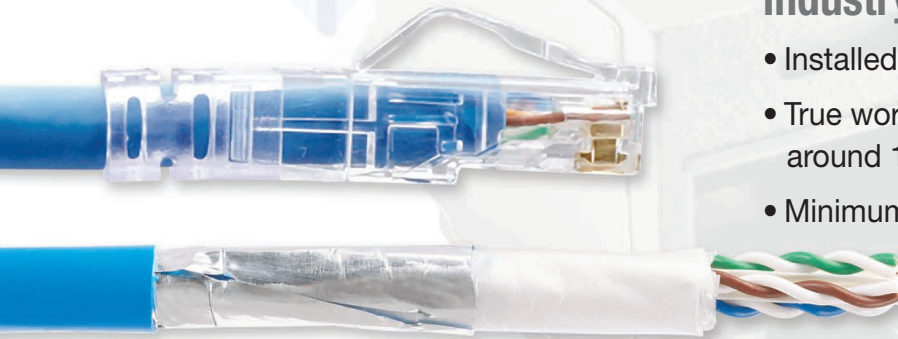
Vari-MaTriX Technology

- Discontinuous metallic foil used on cable and connectors
- Offers optimal PoE performance
- Benefits of unshielded and shielded combined
- Industry's smallest diameter cable (0.250") for ideal fill ratio
- Variable-length foil delivers optimal alien crosstalk and immunity to external noise



Industry's Leading Headroom Performance

- Installed performance using real world testers
- True worst-case scenarios, with 48 1 RU panels and 6 around 1 for 100 meters
- Minimum channel length of 5 meters



Designed for Next Generation Applications

- 100BASE-T, 1000BASE-T, 2.5GBASE-T, 5GBASE-T, 10GBASE-T
- Wireless access points 802.11ac
- Power over Ethernet 802.3af, 802.3at, and 802.3bt
- HDBaseT*

*HDBaseT is a registered trademark of Valens Semiconductor Ltd.

Guaranteed Channel Headroom

Electrical Value	TIA Category 6A	ISO Class E _A
Insertion Loss	3%	3%
NEXT	3.5 dB	2.5 dB
PSNEXT	5 dB	4 dB
PSACR-F	10 dB	10 dB
Return Loss	3 dB	3 dB
PSACR-N	6.5 dB	6.5 dB
PSANEXT	2 dB	2 dB
PSAACR-F	10 dB	10 dB

*Electrical values are above specified standards and consist of worst pair margin per ANSI/TIA-568-C.2 Category 6A and ISO 11801 Class E_A standards.

Designed for Next Generation Power over Ethernet

The unique Panduit® Category 6A Vari-MaTriX system provides the industry's best cabling solution to support the PoE++ 802.3bt standard for power levels up to 100 watts.

Cable

- Vari-MaTriX foil provides optimal heat dissipation
- Industry's highest operating temperature – 90°C
- Industry's largest bundle sizes
- Longest allowed cable runs in hotter temperatures
- LP ratings of 0.7A (plenum) and 0.5A (riser)

Connectors

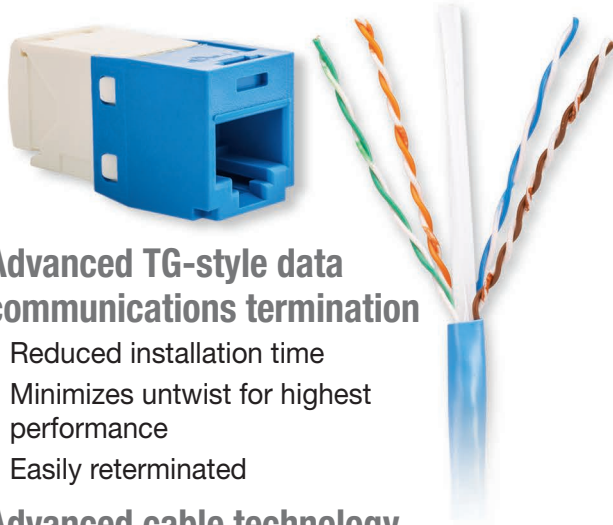
- Integrated arc suppression technology
- Rated to 2,500 live PoE++ connections
- Industry's highest operating temperature – 65°C
- Deliver PoE++ over 24AWG to 28AWG patch cords

Highest Quality Category 6 Solutions

The Highest Quality Category 6 Offering

- Mini-Com® and NetKey® Products built on the same assembly line
- All products held to the same stringent quality standards
- Jacks, patch cords, and cable are component compliant
- Supports PoE, PoE+, and PoE++
- Robust construction

Enhanced Category 6 System



Advanced TG-style data communications termination

- Reduced installation time
- Minimizes untwist for highest performance
- Easily reterminated

Advanced cable technology with 550 MHz cable bandwidth

Industry leading Category 6 headroom

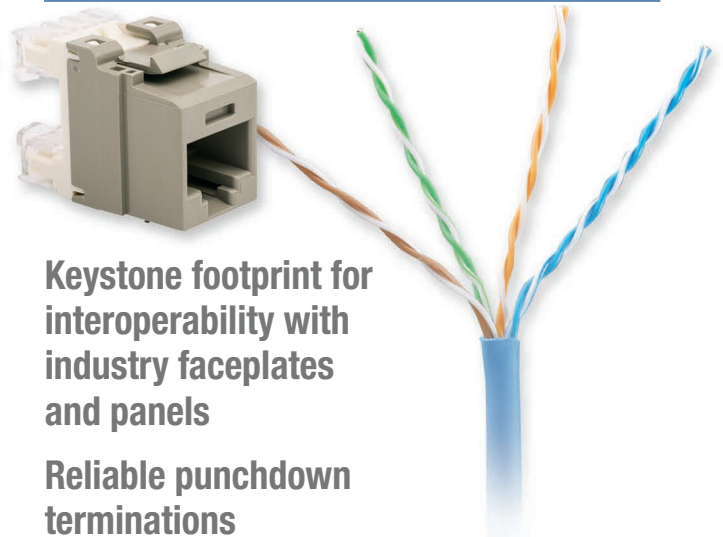
- Extra margin protects cable from installation and usage
- Supports 10GBASE-T over limited distances
- Minimum channel length of 5 meters
- Channel performance guaranteed with CJ688TG** jack and PUP/PUR6004 cable

Custom assemblies and parts available

Guaranteed Channel Headroom	
Electrical Value	Enhanced*
Insertion Loss	5%
NEXT	6.0 dB
PSNEXT	7.5 dB
Return Loss	3.0 dB
ACR-N	7.0 dB
PSACR-N	9.0 dB
ACR-F	7.0 dB
PSACR-F	9.0 dB

*Electrical values are above specified standards and consist of worst pair margin per ANSI/TIA-568-C.2 Category 6 and ISO 11801 Class E standards.

Keystone Category 6 System



Keystone footprint for interoperability with industry faceplates and panels

Reliable punchdown terminations

Quality cable technology with 350 MHz cable bandwidth

Superior Category 6 headroom

- Protects from standard usage and installation
- Minimum channel length of 9 meters
- Channel performance guaranteed with NK688M** jack and PUP/PUR6C04 cable

Guaranteed Channel Headroom	
Electrical Value	NetKey®*
Insertion Loss	3%
NEXT	3.0 dB
PSNEXT	3.0 dB
Return Loss	2.0 dB
ACR-N	3.0 dB
PSACR-N	4.0 dB
ACR-F	4.0 dB
PSACR-F	6.0 dB

*Electrical values are above specified standards and consist of worst pair margin per ANSI/TIA-568-C.2 Category 6 and ISO 11801 Class E standards.

Mini-Com® Unshielded System Components



Mini-Com® Jack Modules	Category 5e	Category 6	Category 6A
Standard Jack Modules	CJ5E88TG**	CJ688TG**	CJ6X88TG**
Shuttered Jack Modules	CJH5E88TG**	CJH688TG**	CJH6X88TG**
45° Angled Jack Wire Cap	CJUDCAPRD-C CJLRCAPRD-C	CJUDCAPWH-C CJLRCAPWH-C	CJUDCAPBU-C CJLRCAPBU-C

Bulk Packs: Standard jack modules available in bulk packs, which package jacks in a single box with no bag.
 Add -24 after part number for packs of 24.
 Add -C after part number for packs of 100.
 ** = Color.



IW = Off White, EI = Electric Ivory, IG = International Gray, BL = Black, BU = Blue, GR = Green, RD = Red, OR = Orange, VL = Violet, YL = Yellow, WH = White.
 Note: Colors shown may differ slightly from actual jack colors.

Copper Cabling System Ordering Guide



Field Terminable Plugs	Straight	Angled
Modular Plug (Compatible with Category 5e, 6 and 6A)	FP6X88MTG	FPUD6X88MTG

Punchdown Patch Panels	Category 5e	Category 6	Category 6A
24-Port Flat	DP245E88TGY	DP24688TGY	DP246X88TGY
24-Port Angled	DPA245E88TGY	DPA24688TGY	DPA246X88TGY
48-Port Flat	DP485E88TGY	DP48688TGY	DP486X88TGY
48-Port Angled	DPA485E88TGY	DPA48688TGY	DPA486X88TGY



Patch Cords	Category 5e	Category 6	Category 6A
Standard Patch Cords	UTPCH*^Y	UTPSP*^Y	UTP6ASD*^A
28AWG Patch Cords	UTP28CH*^A	UTP28SP*^A	UTP28X*^A

* = Length in feet.
 ^ = 2 character color code.



Off White (default, no designation needed), BL = Black, BU = Blue, GR = Green, RD = Red, OR = Orange, VL = Violet, YL = Yellow, GY = Gray.
 Note: Colors shown may differ slightly from actual cable colors.

Mini-Com® Unshielded System Components



Cable	Category 5e	Category 6	Category 6A
Plenum Copper Cable	PUP5504BU-UY	PUP6004BU-W	PUP6AV04BU-G
Riser Copper Cable	PUR5504BU-UY	PUR6004BU-W	PUR6AM04BU-CG

Also available in WH as standard, contact Panduit customer service for more color options.

The proper labeling, strain relief, and network security will enhance the functionality of your network. Consider these solutions:

- RJ45 lock-in device: PSL-DCPLRX
- RJ45 blockout device: PSL-DCJB
- Strain relief bar: SRB19D5BL

See www.panduit.com for additional offerings in network security and strain relief, and for our complete offering of cable management accessories and identification products.



Modular Patch Panels	Flat	Angled
Flush Mount Modular Patch Panels, 24-port, 1 RU	CPP24FMWBLY	CPPA24FMWBLY
Flush Mount Modular Patch Panels, 48-port, 2 RU	CPP48FMWBLY	CPPA48FMWBLY
High Density Flush Mount Modular Panels, 48-port, 1 RU	CPP48HDWBLY	CPPA48HDWBLY



Mini-Com Faceplates	1-Port	2-Port	4-Port
Furniture Faceplate	—	—	CFFP4BL
Furniture Faceplate with Labeling	—	—	CFFPL4BL
Furniture Faceplate, Herman Miller	—	—	CFFPHM4BL
Classic Faceplate Single Gang	CFP1**	CFP2**	CFP4**
Classic Faceplate Single Gang with Label	—	CFPL2**Y	CFPL4**Y

** Colors available: EI (Electric Ivory), IW (Off White), WH (White).

Mini-Com® Shielded System Components



Mini-Com Jack Modules	Category 5e	Category 6	Category 6A
Standard Jack Modules	CJS5E88TG**Y	CJS688TG**Y	CJS6X88TG**Y
Shuttered Jack Modules	CJSH5E88TG**Y	CJSH688TG**Y	CJSH6X88TG**Y
Angled Jack Modules	CJS#5E88TG**Y	CJS#688TG**Y	CJS#6X88TG**Y

Bulk Packs: Standard jack modules available in bulk packs, which package jacks in a single box with no bag. Add -24 after part number for packs of 24.

** = Color; # = LR for left/right angle; UD for Up/Down angle.



No designation = Black, BU = Blue, GR = Green, RD = Red, VL = Violet, YL = Yellow.

Note: Colors shown may differ slightly from actual jack colors.



Field Terminable Plugs	Straight
Modular Plug	FPS6X88MTG

(Compatible with Category 5e, 6 and 6A)



Patch Cords	Category 5e	Category 6/6A
Standard Patch Cords	STPCH*MB#	STP6X*M^
28 AWG Patch Cords	—	STP28X*M^

* = Length in Meters.

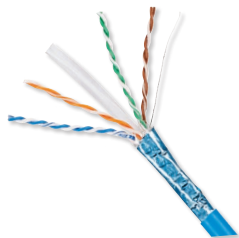
= Boot color, (Category 5e only) options BL (Black), BU (Blue), GR (Green), RD (Red), YL (Yellow), BR (Brown).

^ = 2 character cable color code.



IG = International Gray, BL = Black, BU = Blue, GR = Green, RD = Red, OR = Orange, VL = Violet, YL = Yellow.

Notes: Colors shown may differ slightly from actual cable colors.



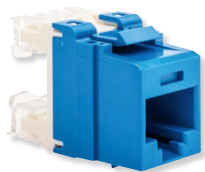
Cable	Category 5e	Category 6A
Plenum Copper Cable, F/UTP	PFP5504BU-UY	PFP6X04BU-UG
Riser Copper Cable, F/UTP	PFR5504BU-UY	PFR6X04BU-CG

Also available in WH as standard, contact Panduit customer service for more color options.



Modular Patch Panels	Flat	Angled
Flush Mount Modular Patch Panels, 24-port, 1 RU	CP24BLY	CPA24BLY
Flush Mount Modular Patch Panels, 48-port, 2 RU	CP48BLY	CPA48BLY
High Density Flush Mount Modular Panels, 48-port, 1 RU	CP48HDBL	CPA48HDBL

NetKey® System Components



Keystone Jack Modules	Category 5e	Category 6	Category 6A
NetKey Punchdown Jack Modules^%	NKP5E88MBU	NK688MBU	NK6X88MBU

^Add -Q to end of part number for box of 25 jacks.
% = Color. Replace BU in part number with any color shown.



IW = Off White, EI = Electric Ivory, IG = International Gray, BL = Black, BU = Blue, GR = Green, RD = Red, OR = Orange, VL = Violet, YL = Yellow, WH = White.

Note: Colors shown may differ slightly from actual jack colors.



NetKey Punchdown Patch Panels	Category 5e	Category 6	Category 6A
24-Port Flat	NK5EPPG24Y	NK6PPG24Y	NK6XPPG24Y
24-Port Angled	NKA5EPPG24Y	NKA6PPG24Y	NKA6XPPG24Y
48-Port Flat	NK5EPPG48Y	NK6PPG48Y	NK6XPPG48Y
48-Port Angled	NKA5EPPG48Y	NKA6PPG48Y	NKA6XPPG48Y

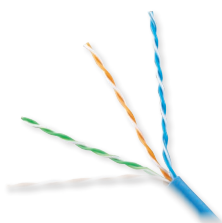


NetKey Patch Cords	Category 5e	Category 6	Category 6A
Patch Cords*	NK5EPCXXBUY	NK6PCXXBUY	NK6APCXXBU

*Replace BU in part number with any color shown. Replace XX in part number with length designation: 3, 5, 7, 10, 14, or 20 feet. For lengths other than listed, see www.panduit.com.



Available colors: Off White (default, no designation needed), BL = Black, BU = Blue, GR = Green, RD = Red, YL = Yellow.
Note: Colors shown may differ slightly from actual cable colors.



Copper Cable	Category 5e	Category 6	Category 6A
Panduit Plenum Copper Cable	PUP5C04BU-U	PUP6C04BU-U	PUP6AS04BU-G
General Cable Plenum Copper Cable	5131278E	7131800	7141819
Panduit Riser Copper Cable	PUR5C04BU-U	PUR6C04BU-U	PUR6AM04BU-CG
General Cable Riser Copper Cable	5133299E	7133800	7133786

Standard colors: Blue and White. Replace BU in part number with WH for White. Contact Customer Service for additional colors.



Keystone Modular Patch Panels	24-Port Flat	24-Port Angled	48-Port Flat	48-Port Angled
Flush Mount Modular Patch Panels	NKPP24FMY	NKPPA24FMY	NKPP48FMY	NKPPA48FMY
Molded Modular Patch Panels	NKPP24P	—	NKPP48P	—



Keystone Faceplate Frames+	2-Port	4-Port
NetKey Classic Faceplates with labels	NK2FIWY	NK4FIWY
NetKey Classic Faceplates with no labels	NK2FNIW	NK4FNIW
NetKey Furniture Faceplate	—	NK4MFBL
NetKey Surface Mount Boxes	NK2BXIW-A	NK4BXIW-AY

Colors: Replace IW (Off White) in part number with WH (White) or EI (Electric Ivory).

Please see www.panduit.com/NetKey for additional information on the complete NetKey Line.



PANDUIT®

**Panduit Corp.
World Headquarters
Tinley Park, IL 60487**

800.777.3300

www.panduit.com

All trademarks, service marks, trade names, product names, and logos appearing in this document are the property of their respective owners.

© 2019 Panduit Corp. ALL RIGHTS RESERVED. COCB29--SA-ENG 1/2019